

Getting Connected (Using phone as modem, via Bluetooth connection)



- 1 Make sure your mobile phone is within range of your computer's Bluetooth connectivity. Typically the range of connectivity between the PC and the phone is about 10 meters in open space.
- 2 Turn on your mobile phone. Follow the instructions in your phone to activate its Bluetooth radio, make it discoverable, and give it a name (optional). At this stage, the mobile phone hasn't been paired with the computer.
- 3 Right-click Bluetooth taskbar icon on the taskbar. Click Add a Bluetooth Device. This will open the Add Bluetooth Device Wizard as shown below.

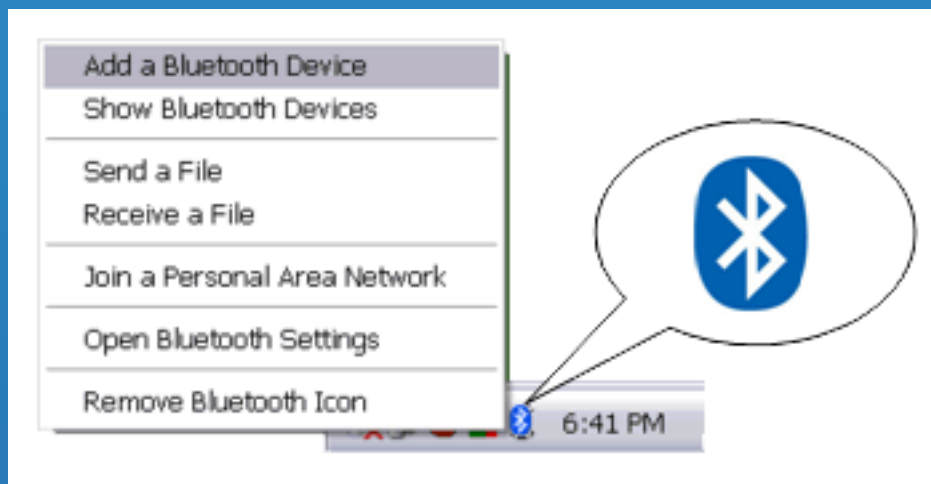


Figure: Bluetooth icon on the system tray to start installing new device.



Click Next.

4

The Add Bluetooth Device Wizard will be searching for discoverable Bluetooth devices within range of your computer.



Getting Connected (Using phone as modem, via Bluetooth connection)

5 Your mobile phone will be shown in the result frame of the device discovery process.



6 Your mobile phone will be shown in the result frame of the device discovery process.



Getting Connected (Using phone as modem, via Bluetooth connection)

7

When connecting your computer to your mobile phone for the first time, you will need to pair both devices. In the screen below, select "Let me choose my own passkey" and input your own passkey (some random numbers or alphabets). If you are concerned about security, it's recommended to input a long and difficult to guess passkey (8 to 16 digits).



8

On the mobile phone, you will be prompted to input the same passkey (also referred as passcode or PIN) as on the computer. You must enter the same passkey as you typed on the computer. After the same passkey has been entered, the mobile phone is paired with the computer.

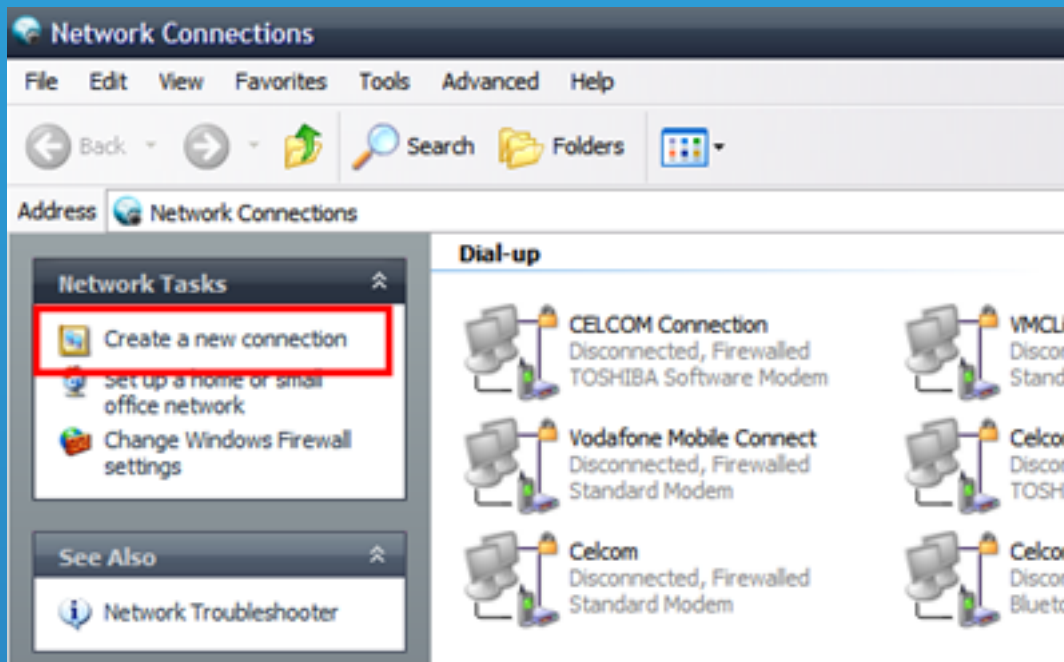
9

Now you are ready to create a Connection to Celcom Broadband service.

10

Launch the Network Connections program from the Control Panel.

11 Click on the "Create a new connection" from the Network Connections Window.



Click Next.

Getting Connected (Using phone as modem, via Bluetooth connection)

12

In Network Connection Type, select "Connect to the Internet". Then click Next.



13

In Getting Ready, select "Set up my connection manually". Then click Next.



Getting Connected (Using phone as modem, via Bluetooth connection)

- 14 In Internet Connection, select "Connect using a dial-up modem". Then click Next.



- 15 Select the Standard Modem over Bluetooth link. Click Next.



Getting Connected (Using phone as modem, via Bluetooth connection)

- 16 In Connection Name, type in "Celcom Broadband" in the textbox. Then click Next.

New Connection Wizard

Connection Name
What is the name of the service that provides your Internet connection?

Type the name of your ISP in the following box.

ISP Name

Celcom Broadband

The name you type here will be the name of the connection you are creating.

< Back Next > Cancel

- 17 In Phone Number text box, type *99#. Then click Next.

New Connection Wizard

Phone Number to Dial
What is your ISP's phone number?

Type the phone number below.

Phone number:

*99#

You might need to include a "1" or the area code, or both. If you are not sure you need the extra numbers, dial the phone number on your telephone. If you hear a modem sound, the number dialed is correct.

< Back Next > Cancel

18 In Internet Account Information, leave this field blank and Then click Next.



New Connection Wizard

Internet Account Information 

You will need an account name and password to sign in to your Internet account.

Type an ISP account name and password, then write down this information and store it in a safe place. (If you have forgotten an existing account name or password, contact your ISP.)

User name:

Password:

Confirm password:

Use this account name and password when anyone connects to the Internet from this computer

Make this the default Internet connection

< Back Next > Cancel

- 19 Check "Add a shortcut to this connection to my desktop" if you want to have a shortcut on your desktop. Then click Finish.



Getting Connected (Using phone as modem, via Bluetooth connection)

- 20 To get connected to Celcom Broadband, double click on the shortcut from Desktop. Click Dial to get connected to Internet.

Connect Celcom Broadband via Bluetooth

User name:

Password:

Save this user name and password for the following users:

Me only

Anyone who uses this computer

Dial:

Dial Cancel Properties Help



Getting Connected (Using phone as modem, via Bluetooth connection)

21 A confirmation message will be shown on your mobile phone. Click on Yes or Allow on the mobile phone to allow the connection to Celcom Broadband to get connected.

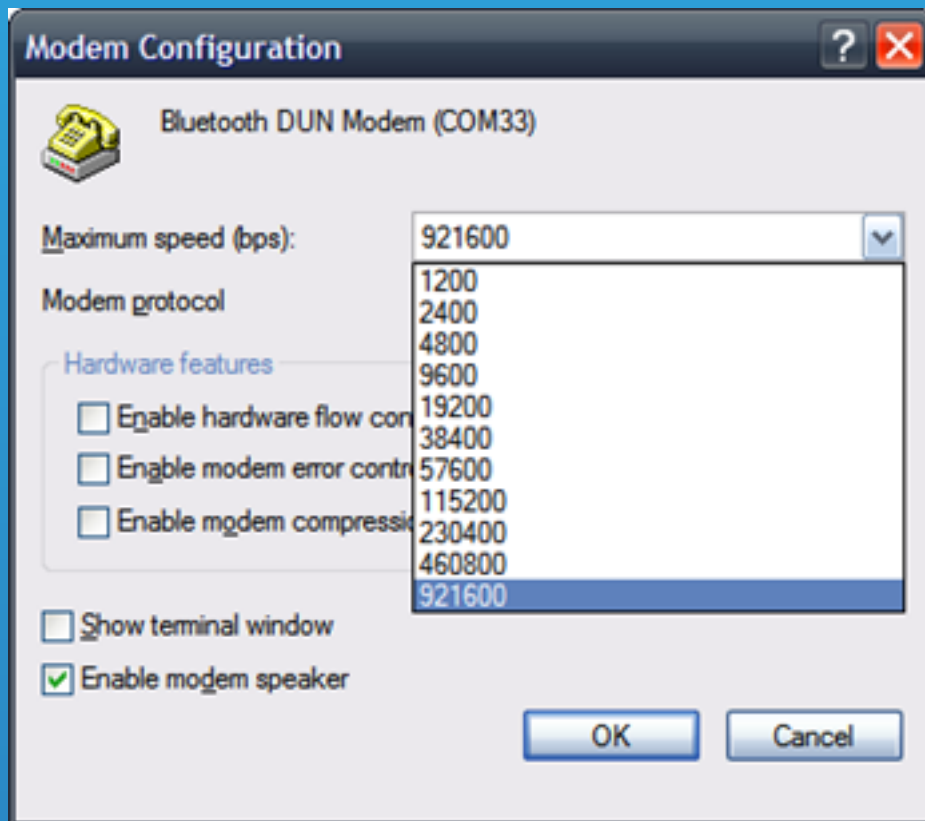
22 Upon successful connection, an icon will be shown in the taskbar showing the Celcom Broadband Connection.



23 To set the Bluetooth modem to its maximum speed, click Configure on your connection Properties (see below picture). On Modem Configuration window that appears, select the highest speed.



Getting Connected (Using phone as modem, via Bluetooth connection)



Click OK.